
2002 KENTUCKY HIGH SCHOOL ATHLETIC ASSOCIATION
BOYS' SWEET SIXTEEN® STATE BASKETBALL TOURNAMENT

March 13-16 • Rupp Arena • Lexington



Wednesday, March 13
Session 1 - Game 2

Mason County Royals
vs.
Butler Bears

FINAL GAME STATS



IT'S SHOWTIME!

2002 KHSAA BOYS' SWEET 16 - Game Box Score

Mason County Royals vs. Butler Bears

Date: 03/13/2002 Time: 2:55 pm Site: Rupp Arena-Lexington, KY Attendance: 12269

Visitors: Butler Bears															
##	Name	P	FG	3 Pt	FT	PTS	ORB	DRB	TR	PF	AST	TO	BS	ST	MIN
10	Duane Parisek		1/3	0/1	0/1	2	2	1	3	0	2	0	1	1	8:08
11	* Trey Cape	G	6/15	2/6	1/1	15	0	0	0	1	2	5	0	1	23:12
13	Deshawn Pendleton		2/10	1/5	1/2	6	1	2	3	2	0	2	0	0	18:03
20	Denny Schulten		0/2	0/2	0/0	0	0	0	0	1	0	0	0	0	1:28
23	Antonio Drane		0/0	0/0	0/0	0	0	0	0	0	0	0	0	1	1:22
24	Steve Hennessey		1/5	0/1	0/0	2	2	1	3	2	0	1	0	0	11:34
30	Kyle Harkins		2/2	0/0	0/0	4	0	0	0	1	0	0	0	1	1:28
32	* David Peercy	F	0/2	0/1	0/0	0	0	3	3	3	0	0	0	0	20:17
33	* Justin Cunningham	G	2/10	0/1	0/0	4	2	0	2	1	2	2	0	2	19:55
35	* Calvin Roach	G	4/6	0/0	1/4	9	3	3	6	3	0	1	0	1	22:24
40	* Dustin Cape	F	9/16	1/2	3/4	22	4	5	9	1	0	4	0	1	29:25
42	Michael Frank		0/0	0/0	0/0	0	0	0	0	0	0	0	0	0	1:22
44	Jeremy Mayes		1/1	0/0	0/0	2	1	1	2	0	0	0	0	0	1:22
	Team						4	1	5						
	Totals		28/72	4/19	6/12	66	19	17	36	15	6	15	1	8	160

Total FG	1st Half	12/31	38.7%	2nd Half	16/41	39.0%	Game	28/72	38.9%
3 PT FG	1st Half	2/8	25.0%	2nd Half	2/11	18.2%	Game	4/19	21.1%
Free Throws	1st Half	2/4	50.0%	2nd Half	4/8	50.0%	Game	6/12	50.0%

Home: Mason County Royals															
##	Name	P	FG	3 Pt	FT	PTS	ORB	DRB	TR	PF	AST	TO	BS	ST	MIN
3	* Tee Commodore	G	3/6	0/0	4/4	10	1	3	4	3	4	3	0	1	21:06
4	* Chris Lofton	F	9/13	6/10	5/7	29	1	6	7	3	0	3	1	2	26:38
10	* Robert Myrick	G	8/14	7/9	0/0	23	0	0	0	0	2	2	0	0	22:42
11	Seth Vice		0/0	0/0	0/0	0	0	1	1	0	0	1	0	0	1:51
22	Wesley Jones		0/2	0/0	1/2	1	1	0	1	0	0	0	0	0	1:22
23	Nathan Myrick		2/5	0/0	1/4	5	1	0	1	1	3	2	0	0	15:49
31	* D.J. Chambers	F	4/4	0/0	1/2	9	4	3	7	2	1	1	1	0	19:59
32	Brad Pritchard		0/0	0/0	0/0	0	0	0	0	0	0	1	0	0	1:22
33	Dustin Grutza		2/4	0/1	1/2	5	0	4	4	1	2	0	0	1	15:14
34	Jarrod Litzinger		0/1	0/1	0/0	0	0	3	3	2	0	0	0	0	7:55
40	J.J. Burns		0/0	0/0	0/0	0	0	0	0	0	0	0	0	0	1:22
51	* G.G. Lofton	C	5/10	0/0	1/2	11	3	7	10	4	3	1	0	0	24:40
	Team						2	1	3						
	Totals		33/59	13/21	14/23	93	13	28	41	16	15	14	2	4	160

Total FG	1st Half	16/27	59.3%	2nd Half	17/32	53.1%	Game	33/59	55.9%
3 PT FG	1st Half	3/5	60.0%	2nd Half	10/16	62.5%	Game	13/21	61.9%
Free Throws	1st Half	4/6	66.7%	2nd Half	10/17	58.8%	Game	14/23	60.9%

	But	Mason		But	Mason		But	Mason
Free Throw Pts	6	14	3Pt Points	12	39	Pts/Possession	0.69	0.99
Pts off Turnovers	17	23	2nd Chance Points	15	17	Pts off Bench	16	11
Total Rebounds	36	41	Team Rebounds	5	3	Dead Ball Reb	2	6
Off Rebound %	40.4	43.3	Def Rebound %	56.7	59.6	Total Rebound %	46.8	53.2

Technical Fouls: **But** None, **Mason** None
 Officials: Roy Boisture, Tony Gray, Bob Craft

	Qtr 1	Qtr 2	Qtr 3	Qtr 4	OT 1	OT 2	OT 3	OT 4	Total
Butler Bears	20	8	16	22	0	0	0	0	66
Mason County Royals	16	23	29	25	0	0	0	0	93

2002 KHSAA BOYS' SWEET 16 - Play by Play Report - Period: 1 (pg 1)
Mason County Royals vs. Butler Bears
Date: 03/13/2002 Time: 2:55 pm Site: Rupp Arena-Lexington, KY Attendance:

Name	Action	Action	Score	Clock	Diff	Name	Action	Action
3 T Commodore	Start Game					11 T Cape	Start Game	
4 C Lofton	Start Game					32 D Peercy	Start Game	
10 R Myrick	Start Game					33 J Cunningham	Start Game	
31 D Chambers	Start Game					35 C Roach	Start Game	
51 G Lofton	Start Game					40 D Cape	Start Game	
G Lofton	Jump Ball Loss			1 7:59		D Cape	Jump Ball Win	
G Lofton	Def Rebound			1 7:51		D Cape	FG Attempt	
T Commodore	FG Attempt	Mason Off Reb		1 7:45				
T Commodore	Turnover	(Bad Pass)		1 7:39				
				1 7:37		D Cape	Steal	
				1 7:36		D Cape	Turnover	(Fumble)
T Commodore	Steal			1 7:34				
R Myrick	FG Attempt	D Chambers Off Reb		1 7:31				
D Chambers	Putback Made		2-0	1 7:29 +2				
				1 7:06		J Cunningham	FG Attempt	J Cunningham Off Reb
D Chambers	Def Rebound			1 7:04		J Cunningham	Putback Att	
D Chambers	Turnover	(Bad Pass)		1 7:00				
				1 6:58		J Cunningham	Steal	
D Chambers	Block			1 6:57		D Peercy	FG Attempt	C Roach Off Reb
			2-2	1 6:54 (T1)		C Roach	Putback Made	
R Myrick	Turnover	(Bad Pass)		1 6:20				
				1 6:18		J Cunningham	Steal	
			2-4	1 6:15 -2 (L1)		C Roach	Layup Made	J Cunningham Assist
R Myrick	3Pt Made	T Commodore Assist	5-4	1 5:56 +1 (L2)				
				5-6 1 5:31 -1 (L3)		D Cape	Layup Made	T Cape Assist
G Lofton	Layup Made	R Myrick Assist	7-6	1 5:12 +1 (L4)				
T Commodore	Def Rebound			1 4:59		T Cape	3Pt Attempt	
G Lofton	Layup Made	G Lofton Assist	9-6	1 4:52 +3				
G Lofton	Def Rebound			1 4:35		T Cape	Layup Att	
R Myrick	Layup Att			1 4:27		C Roach	Def Rebound	
				9-8 1 4:19 +1		C Roach	Layup Made	
C Lofton	3Pt Made	T Commodore Assist	12-8	1 4:02 +4				
				1 3:54		T Cape	Layup Att	D Cape Off Reb
			12-10	1 3:50 +2		D Cape	Putback Made	
C Lofton	3Pt Attempt			1 3:36		D Cape	Def Rebound	
				12-13 1 3:24 -1 (L5)		D Cape	3Pt Made	
R Myrick	FG Made		14-13	1 3:12 +1 (L6)				
				14-15 1 2:44 -1 (L7)		T Cape	Layup Made	
G Lofton	FG Attempt			1 2:33		But	Def Rebound	
				1 2:32				
				1 2:32		T Cape	Leave Game	
				1 2:32		D Peercy	Leave Game	
				1 2:32		J Cunningham	Leave Game	
				1 2:32		C Roach	Leave Game	
				1 2:32		D Parisek	Enter Game	for D Cape
				1 2:32		D Pendleton	Enter game	
				1 2:32		S Hennessey	Enter game	
				1 2:32		J Cunningham	Enter game	
				1 2:32		D Cape	Enter game	
T Commodore	Leave Game			1 2:32				
C Lofton	Leave Game			1 2:32				
R Myrick	Leave Game			1 2:32				
D Chambers	Leave Game			1 2:32				
N Myrick	Enter Game	for G Lofton		1 2:32				
D Grutza	Enter game			1 2:32				
T Commodore	Enter game			1 2:32				
G Lofton	Enter game			1 2:32				
J Litzinger	Enter game			1 2:32				
			14-17	1 2:18 -3		J Cunningham	FG Made	
G Lofton	Personal Foul			1 2:07				
G Lofton	Turnover			1 2:07				

2002 KHSAA BOYS' SWEET 16 - Play by Play Report - Period: 1 (pg 2)
Mason County Royals vs. Butler Bears
Date: 03/13/2002 Time: 2:55 pm Site: Rupp Arena-Lexington, KY Attendance:

Name	Action	Action	Score	Clock	Diff	Name	Action	Action
				1 1:57		D Parisek	3Pt Attempt	D Pendleton Off Reb
J Litzinger	Def Rebound			1 1:53		D Pendleton	FG Attempt	
T Commodore	FG Made		16-17	1 1:31	-1			
			16-20	1 1:14	-4	D Pendleton	3Pt Made	J Cunningham Assist
T Commodore	Personal Foul			1 1:13				
				1 1:13		D Percy	Enter Game	for D Cape
C Lofton	Enter Game	for J Litzinger		1 1:13				
				1 1:13		T Cape	Enter Game	for J Cunningham
R Myrick	Enter Game	for T Commodore		1 1:13				
G Lofton	Def Rebound			1 1:13		D Pendleton	FT Attempt	
				1 1:03		S Hennessey	FG Attempt	S Hennessey Off Reb
				1 0:45		D Parisek	FG Attempt	D Parisek Off Reb
				1 0:02		T Cape	Turnover	

End of Period Summary Royals 16 Bears 20

Largest Lead: Royals 12 Bears 8 (4 pts)

Lead Changes: 7 Ties: 1

Lead in Period: Royals 12 Bears 8 (4 pts)

Lead Changes: 7 Ties: 1 (this period)

4 for 4 oppo pts

Turnovers

2 for 2 oppo pts

2 for 2 pts

2nd Chances

6 for 4 pts

7/12 for 58.3 %

Field Goals

9/20 for 45.0 %

0/0 for 0.00 %

Free Throws

0/1 for 0.00 %

2002 KHSAA BOYS' SWEET 16 - Play by Play Report - Period: 2 (pg 1)
Mason County Royals vs. Butler Bears
Date: 03/13/2002 Time: 2:55 pm Site: Rupp Arena-Lexington, KY Attendance:

Name	Action	Action	Score	Clock	Diff	Name	Action	Action
C Lofton	Leave Game			2 8:00				
R Myrick	Leave Game			2 8:00				
N Myrick	Leave Game			2 8:00				
D Grutza	Leave Game			2 8:00				
T Commodore	Enter Game	for G Lofton		2 8:00				
C Lofton	Enter game			2 8:00				
R Myrick	Enter game			2 8:00				
D Chambers	Enter game			2 8:00				
G Lofton	Enter game			2 8:00				
				2 8:00		D Parisek	Leave Game	
				2 8:00		T Cape	Leave Game	
				2 8:00		D Pendleton	Leave Game	
				2 8:00		S Hennessey	Leave Game	
				2 8:00		T Cape	Enter Game	for D Peercy
				2 8:00		D Peercy	Enter game	
				2 8:00		J Cunningham	Enter game	
				2 8:00		C Roach	Enter game	
				2 8:00		D Cape	Enter game	
R Myrick	FG Attempt			2 7:50		D Peercy	Def Rebound	
				2 7:35		J Cunningham	Layup Att	But Off Reb
G Lofton	Personal Foul			2 7:33				
J Litzinger	Enter Game	for G Lofton		2 7:33				
				2 7:33		D Cape	FT Attempt	But Deadball Reb
			16-21	2 7:33 -5		D Cape	FT Made	
C Lofton	FG Made		18-21	2 7:18 -3				
C Lofton	Def Rebound			2 6:59		T Cape	FG Attempt	
T Commodore	Offensive Foul			2 6:49				
T Commodore	Turnover			2 6:49				
				2 6:49		D Peercy	Charge Taken	
D Grutza	Enter Game	for T Commodore		2 6:49				
J Litzinger	Personal Foul			2 6:35				
J Litzinger	Def Rebound			2 6:31		J Cunningham	3Pt Attempt	
C Lofton	3Pt Made		21-21	2 6:22 (T2)				
				2 6:05		D Cape	Turnover	(Fumble)
R Myrick	Leave Game			2 6:05				
N Myrick	Enter Game	for J Litzinger		2 6:05				
G Lofton	Enter game			2 6:05				
N Myrick	FG Attempt	G Lofton Off Reb		2 5:43				
G Lofton	Putback Made		23-21	2 5:42 +2 (L8)				
				2 5:26		T Cape	Turnover	(Bad Pass)
G Lofton	FG Attempt	C Lofton Off Reb		2 5:23				
C Lofton	Putback Made		25-21	2 5:21 +4				
				2 5:18		But	20 Sec Time Out	
				2 5:18		D Pendleton	Enter Game	for T Cape
C Lofton	Block	D Chambers Def Reb		2 4:51		J Cunningham	FG Attempt	
D Chambers	FT Made		26-21	2 4:47 +5		C Roach	Personal Foul	
D Chambers	FT Attempt			2 4:47		D Cape	Def Rebound	
				2 4:39		D Pendleton	Turnover	(Fumble)
N Myrick	FG Made		28-21	2 4:25 +7				
C Lofton	Personal Foul			2 4:14				
				2 4:03		D Cape	Turnover	(Traveling)
D Grutza	3Pt Attempt	D Chambers Off Reb		2 3:53				
D Chambers	Layup Made		30-21	2 3:47 +9				
				2 3:31		D Cape	Turnover	(Fumble)
D Grutza	Layup Made		32-21	2 3:19 +11				
				2 3:15		But	20 Sec Time Out	
				2 3:15		D Pendleton	Leave Game	
				2 3:15		D Peercy	Leave Game	
				2 3:15		J Cunningham	Leave Game	
				2 3:15		C Roach	Leave Game	
				2 3:15		T Cape	Enter Game	for D Cape

2002 KHSAA BOYS' SWEET 16 - Play by Play Report - Period: 2 (pg 2)
Mason County Royals vs. Butler Bears
Date: 03/13/2002 Time: 2:55 pm Site: Rupp Arena-Lexington, KY Attendance:

Name	Action	Action	Score	Clock	Diff	Name	Action	Action
				2 3:15		T Cape	Enter Game	for T Cape
				2 3:15		D Pendleton	Enter game	
				2 3:15		S Hennessey	Enter game	
				2 3:15		C Roach	Enter game	
				2 3:15		D Cape	Enter game	
C Lofton	Steal			2 3:04		S Hennessey	Turnover	
				2 3:04				
				2 3:03		C Roach	Personal Foul	
				2 3:03		D Pendleton	Leave Game	
				2 3:03		D Parisek	Enter Game	for C Roach
				2 3:03		J Cunningham	Enter game	
C Lofton	FT Made		33-21	2 3:03	+12			
C Lofton	FT Made		34-21	2 3:03	+13			
				2 2:59		J Cunningham	Turnover	(Bad Pass)
N Myrick	Offensive Foul			2 2:59				
N Myrick	Turnover			2 2:59				
				2 2:59		S Hennessey	Charge Taken	
				2 2:59				
			34-23	2 2:40	+11	S Hennessey	FG Made	
C Lofton	Turnover			2 2:25				
				2 2:24		D Parisek	Steal	
			34-25	2 2:19	+9	T Cape	FG Made	D Parisek Assist
D Chambers	Personal Foul			2 2:19				
				2 2:19		D Pendleton	Enter Game	for J Cunningham
			34-26	2 2:19	+8	T Cape	FT Made	
C Lofton	Leave Game			2 2:19				
T Commodore	Enter Game	for D Chambers		2 2:19				
R Myrick	Enter game			2 2:19				
N Myrick	FG Attempt	Mason Off Reb		2 2:09		D Parisek	Block	
D Grutza	FG Attempt			2 1:59		D Cape	Def Rebound	
D Grutza	Def Rebound			2 1:48		D Cape	3Pt Attempt	
N Myrick	Layup Made	T Commodore Assist	36-26	2 1:40	+10			
				2 1:16		D Cape	FG Attempt	But Off Reb
D Grutza	Leave Game			2 1:14				
C Lofton	Enter Game	for G Lofton		2 1:14				
J Litzinger	Enter game			2 1:14				
			36-28	2 1:09	+8	D Cape	Layup Made	D Parisek Assist
				2 0:58		T Cape	Personal Foul	
C Lofton	FT Attempt	Mason Deadball Reb		2 0:58				
C Lofton	FT Made		37-28	2 0:58	+9			
D Chambers	Enter Game	for N Myrick		2 0:58				
D Chambers	Def Rebound			2 0:29		T Cape	3Pt Attempt	
T Commodore	FG Made	D Chambers Assist	39-28	2 0:21	+11			
N Myrick	Enter Game	for T Commodore		2 0:18				
C Lofton	Def Rebound			2 0:03		D Pendleton	3Pt Attempt	

End of Period Summary Royals 39 Bears 28

Largest Lead: Royals 34 Bears 21 (13 pts)

Lead in Period: Royals 34 Bears 21 (13 pts)

3 for 5 oppo pts

4 for 6 pts

9/15 for 60.0 %

4/6 for 66.7 %

Turnovers

2nd Chances

Field Goals

Free Throws

Lead Changes: 8 Ties: 2

Lead Changes: 1 Ties: 1 (this period)

7 for 12 oppo pts

2 for 0 pts

3/11 for 27.3 %

2/3 for 66.7 %

2002 KHSAA BOYS' SWEET 16 - Play by Play Report - Period: 3 (pg 1)
Mason County Royals vs. Butler Bears
Date: 03/13/2002 Time: 2:55 pm Site: Rupp Arena-Lexington, KY Attendance: 12269

Name	Action	Action	Score	Clock	Diff	Name	Action	Action
C Lofton	Leave Game			3 8:00				
R Myrick	Leave Game			3 8:00				
N Myrick	Leave Game			3 8:00				
D Chambers	Leave Game			3 8:00				
J Litzinger	Leave Game			3 8:00				
				3 8:00		D Parisek	Leave Game	
				3 8:00		T Cape	Leave Game	
				3 8:00		D Pendleton	Leave Game	
				3 8:00		S Hennessey	Leave Game	
				3 8:00		D Cape	Leave Game	
T Commodore	Enter game			3 8:00				
G Lofton	Enter game			3 8:00				
C Lofton	Enter game			3 8:00				
R Myrick	Enter game			3 8:00				
D Chambers	Enter game			3 8:00				
				3 8:00		T Cape	Enter game	
				3 8:00		D Percy	Enter game	
				3 8:00		J Cunningham	Enter game	
				3 8:00		C Roach	Enter game	
				3 8:00		D Cape	Enter game	
G Lofton	FG Made		41-28	3 7:43	+13			
				3 7:30		J Cunningham	FG Attempt	D Cape Off Reb
				3 7:28		D Cape	Putback Att	But Off Reb
			41-30	3 7:25	+11	D Cape	FG Made	T Cape Assist
C Lofton	3Pt Made		44-30	3 7:12	+14			
			44-32	3 7:01	+12	D Cape	FG Made	
T Commodore	FG Attempt			3 6:48		C Roach	Def Rebound	
			44-34	3 6:39	+10	C Roach	Layup Made	
R Myrick	3Pt Made	G Lofton Assist	47-34	3 6:24	+13			
D Chambers	Personal Foul			3 6:24				
				3 6:19		D Pendleton	Enter Game	for J Cunningham
				3 6:12		D Pendleton	Turnover	
				3 6:10				
C Lofton	Steal			3 6:06		D Pendleton	Def Rebound	
R Myrick	FG Attempt			3 6:02				
T Commodore	Personal Foul			3 6:02				
C Lofton	Def Rebound			3 5:52		D Cape	FG Attempt	
				3 5:50		D Percy	Personal Foul	
C Lofton	3Pt Attempt	G Lofton Off Reb		3 5:39				
G Lofton	Putback Made		49-34	3 5:36	+15			
				3 5:29		T Cape	Turnover	(Traveling)
N Myrick	Enter Game	for T Commodore		3 5:29				
				3 5:29		But	Time Out	
R Myrick	3Pt Attempt	N Myrick Off Reb		3 5:20				
				3 5:16		D Percy	Personal Foul	
N Myrick	FT Attempt	Mason Deadball Reb		3 5:16				
N Myrick	FT Attempt	D Chambers Off Reb		3 5:16				
D Chambers	Putback Made		51-34	3 5:14	+17			
G Lofton	Def Rebound			3 5:04		T Cape	FG Attempt	
N Myrick	Turnover	(Traveling)		3 4:54				
G Lofton	Personal Foul			3 4:39				
C Lofton	Def Rebound			3 4:21		D Cape	FG Attempt	
				3 4:14		S Hennessey	Enter Game	for D Percy
Mason	20 Sec Time Out			3 4:06				
R Myrick	3Pt Made	N Myrick Assist	54-34	3 3:59	+20			
				3 3:54		T Cape	Turnover	(Double Dribble)
				3 3:54		J Cunningham	Enter Game	for T Cape
R Myrick	3Pt Made	G Lofton Assist	57-34	3 3:34	+23			
				3 3:18		C Roach	Turnover	(Fumble)
				3 3:18		T Cape	Enter Game	for D Pendleton
T Commodore	Enter Game	for D Chambers		3 3:18				
C Lofton	Turnover	(Bad Pass)		3 3:09				

2002 KHSAA BOYS' SWEET 16 - Play by Play Report - Period: 3 (pg 2)
Mason County Royals vs. Butler Bears
Date: 03/13/2002 Time: 2:55 pm Site: Rupp Arena-Lexington, KY Attendance: 12269

Name	Action	Action	Score	Clock	Diff	Name	Action	Action
			57-36	3 3:07		C Roach	Steal	
R Myrick	3Pt Made		60-36	3 3:02	+21	T Cape	Layup Made	
			60-38	3 2:46	+24			
D Grutza	Enter Game	for N Myrick		3 2:27	+22	T Cape	FG Made	
R Myrick	3Pt Made	D Grutza Assist	63-38	3 2:23				
				3 2:11	+25			
			63-40	3 1:55		C Roach	FG Attempt	D Cape Off Reb
R Myrick	3Pt Attempt	T Commodore Off Reb		3 1:52	+23	D Cape	Putback Made	
T Commodore	Putback Made		65-40	3 1:39				
				3 1:36	+25			
			65-42	3 1:26		J Cunningham	FG Attempt	J Cunningham Off Reb
				3 1:24	+23	J Cunningham	Putback Made	
				3 1:18		D Cape	Personal Foul	
R Myrick	Leave Game			3 1:18				
N Myrick	Enter Game	for G Lofton		3 1:18				
J Litzinger	Enter game			3 1:18				
				3 1:18		T Cape	Leave Game	
				3 1:18		D Pendleton	Enter Game	for S Hennessey
				3 1:18		D Peercy	Enter game	for C Roach
				3 1:18		D Parisek	Enter game	
C Lofton	3Pt Made	D Grutza Assist	68-42	3 1:04	+26			
J Litzinger	Personal Foul		68-44	3 0:49	+24	D Parisek	FG Made	
				3 0:49				
T Commodore	Def Rebound			3 0:49		D Parisek	FT Attempt	D Parisek Off Reb
C Lofton	3Pt Attempt			3 0:39		D Cape	FG Attempt	
				3 0:04		D Parisek	Def Rebound	

End of Period Summary Royals 68 - Bears 44

Largest Lead: Royals 68 Bears 42 (26 pts)
Lead in Period: Royals 68 Bears 42 (26 pts)
2 for 2 oppo pts
4 for 6 pts
11/17 for 64.7 %
0/2 for 0.00 %

Turnovers
2nd Chances
Field Goals
Free Throws

Lead Changes: 8 Ties: 2
Lead Changes: 0 Ties: 0 (this period)
4 for 5 oppo pts
5 for 6 pts
8/16 for 50.0 %
0/1 for 0.00 %

2002 KHSAA BOYS' SWEET 16 - Play by Play Report - Period: 4 (pg 1)

Mason County Royals vs. Butler Bears

Date: 03/13/2002 Time: 2:55 pm Site: Rupp Arena-Lexington, KY Attendance: 12269

Name	Action	Action	Score	Clock	Diff	Name	Action	Action
T Commodore	Leave Game			4 8:00				
C Lofton	Leave Game			4 8:00				
N Myrick	Leave Game			4 8:00				
D Grutza	Leave Game			4 8:00				
R Myrick	Enter Game	for J Litzinger		4 8:00				
D Chambers	Enter game			4 8:00				
G Lofton	Enter game			4 8:00				
				4 8:00		T Cape	Enter Game	for D Pendleton
				4 8:00		D Pendleton	Enter Game	for J Cunningham
T Commodore	Enter game			4 8:00				
C Lofton	Enter game			4 8:00				
			68-46	4 7:50		D Pendleton	Layup Att	D Cape Off Reb
				4 7:46	+22	D Cape	Putback Made	
T Commodore	Turnover			4 7:24				
				4 7:23		T Cape	Steal	
C Lofton	Def Rebound			4 7:21		T Cape	Layup Att	
Mason	Time Out			4 7:14				
				4 7:14		J Cunningham	Enter Game	for T Cape
G Lofton	Layup Att	D Chambers Off Reb		4 7:02				
D Chambers	Putback Made		70-46	4 7:01	+24			
G Lofton	Def Rebound			4 6:51		D Pendleton	Layup Att	
				4 6:45		J Cunningham	Personal Foul	
				4 6:45		D Parisek	Leave Game	
				4 6:45		S Hennessey	Enter Game	for D Peercy
				4 6:45		C Roach	Enter game	
C Lofton	FT Attempt	Mason Deadball Reb		4 6:45				
C Lofton	FT Made		71-46	4 6:45	+25			
			71-48	4 6:33	+23	D Cape	FG Made	
R Myrick	Turnover			4 6:15				
G Lofton	Personal Foul			4 6:06				
D Chambers	Leave Game			4 6:06				
N Myrick	Enter Game	for G Lofton		4 6:06				
D Grutza	Enter game			4 6:06				
			71-49	4 6:06	+22	D Cape	FT Made	
			71-50	4 6:06	+21	D Cape	FT Made	
R Myrick	3Pt Made	T Commodore Assist	74-50	4 5:55	+24			
				4 5:48		J Cunningham	Turnover	(Traveling)
C Lofton	3Pt Made	N Myrick Assist	77-50	4 5:43	+27			
				4 5:31		J Cunningham	FG Attempt	C Roach Off Reb
D Grutza	Personal Foul		77-51	4 5:29	+26	C Roach	FT Made	
				4 5:29		C Roach	FT Attempt	C Roach Off Reb
C Lofton	Personal Foul			4 5:22				
G Lofton	Enter Game	for R Myrick		4 5:22				
				4 5:22		C Roach	FT Attempt	But Deadball Reb
G Lofton	Def Rebound			4 5:22		C Roach	FT Attempt	
				4 5:10		D Pendleton	Personal Foul	
				4 5:10		T Cape	Enter Game	for J Cunningham
T Commodore	FG Attempt			4 5:05		D Cape	Def Rebound	
			77-53	4 5:01	+24	D Pendleton	Layup Made	
C Lofton	Personal Foul		77-54	4 5:01	+23	D Pendleton	FT Made	
N Myrick	FG Attempt			4 4:50		S Hennessey	Def Rebound	
				4 4:43		T Cape	Turnover	(Fumble)
D Grutza	Steal			4 4:40				
G Lofton	FG Attempt	G Lofton Off Reb		4 4:37				
				4 4:33		C Roach	Personal Foul	
G Lofton	FT Attempt	Mason Deadball Reb		4 4:33				
G Lofton	FT Made		78-54	4 4:33	+24			
Mason	Def Rebound			4 4:27		S Hennessey	3Pt Attempt	
				4 4:24		But	Time Out	
				4 4:24		T Cape	Leave Game	
				4 4:24		D Schulten	Enter Game	for C Roach

2002 KHSAA BOYS' SWEET 16 - Play by Play Report - Period: 4 (pg 2)

Mason County Royals vs. Butler Bears

Date: 03/13/2002 Time: 2:55 pm Site: Rupp Arena-Lexington, KY Attendance: 12269

Name	Action	Action	Score	Clock	Diff	Name	Action	Action
				4 4:24		K Harkins	Enter game	
				4 4:18		D Schulten	Personal Foul	
				4 4:18		D Schulten	Leave Game	
				4 4:18		T Cape	Enter Game	for K Harkins
				4 4:18		C Roach	Enter game	
T Commodore	FT Made		79-54	4 4:18	+25			
T Commodore	FT Made		80-54	4 4:18	+26			
R Myrick	Enter Game	for C Lofton		4 4:18				
				4 4:12		S Hennessey	FG Attempt	S Hennessey Off Reb
D Grutza	Def Rebound			4 4:09		S Hennessey	Putback Att	
D Grutza	FT Made		81-54	4 4:05	+27	S Hennessey	Personal Foul	
D Grutza	FT Attempt			4 4:05		D Cape	Def Rebound	
Mason	Def Rebound	(Dead Ball Reb)		4 3:55		T Cape	3Pt Attempt	
				4 3:54		S Hennessey	Personal Foul	
				4 3:54		D Peercy	Enter Game	for S Hennessey
N Myrick	FT Made		82-54	4 3:54	+28			
N Myrick	FT Attempt			4 3:54		D Peercy	Def Rebound	
D Chambers	Enter Game	for N Myrick		4 3:52				
D Grutza	Def Rebound			4 3:45		D Pendleton	3Pt Attempt	
G Lofton	FG Attempt			4 3:30		C Roach	Def Rebound	
G Lofton	Def Rebound			4 3:21		C Roach	Layup Att	
C Lofton	Enter Game	for T Commodore		4 3:20				
C Lofton	3Pt Made		85-54	4 3:08	+31			
				4 3:00				
			85-57	4 3:00	+28	T Cape	3Pt Made	
C Lofton	3Pt Attempt			4 2:45		D Pendleton	Def Rebound	
D Grutza	Def Rebound			4 2:37		T Cape	3Pt Attempt	
J Litzinger	Enter Game	for D Chambers		4 2:36				
N Myrick	Enter Game	for G Lofton		4 2:36				
C Lofton	Turnover			4 2:34				
J Litzinger	Def Rebound			4 2:29		D Pendleton	3Pt Attempt	
D Grutza	Layup Made	R Myrick Assist	87-57	4 2:17	+30			
C Lofton	Def Rebound			4 2:07		D Peercy	3Pt Attempt	
C Lofton	FG Made	N Myrick Assist	89-57	4 2:00	+32			
C Lofton	FT Made		90-57	4 2:00	+33	D Peercy	Personal Foul	
T Commodore	Enter Game	for C Lofton		4 2:00				
T Commodore	Def Rebound			4 1:56		D Pendleton	3Pt Attempt	
				4 1:51		D Pendleton	Personal Foul	
S Vice	Enter Game	for R Myrick		4 1:51				
T Commodore	FT Made		91-57	4 1:51	+34			
T Commodore	FT Made		92-57	4 1:51	+35			
			92-60	4 1:45	+32	T Cape	3Pt Made	
J Litzinger	3Pt Attempt			4 1:30		D Peercy	Def Rebound	
				4 1:23		D Pendleton	FG Attempt	But Off Reb
				4 1:22		T Cape	Leave Game	
				4 1:22		D Pendleton	Leave Game	
				4 1:22		D Peercy	Leave Game	
				4 1:22		C Roach	Leave Game	
				4 1:22		D Schulten	Enter Game	for D Cape
				4 1:22		A Drane	Enter game	
T Commodore	Leave Game			4 1:22				
N Myrick	Leave Game			4 1:22				
W Jones	Enter Game	for D Grutza		4 1:22				
B Pritchard	Enter game			4 1:22				
J Burns	Enter game			4 1:22				
				4 1:22		K Harkins	Enter game	
				4 1:22		M Frank	Enter game	
				4 1:22		J Mayes	Enter game	
				4 1:20		D Schulten	3Pt Attempt	J Mayes Off Reb
			92-62	4 1:19	+30	J Mayes	Putback Made	
S Vice	Turnover			4 1:04				
				4 1:03		K Harkins	Steal	

2002 KHSAA BOYS' SWEET 16 - Play by Play Report - Period: 4 (pg 3)

Mason County Royals vs. Butler Bears

Date: 03/13/2002 Time: 2:55 pm Site: Rupp Arena-Lexington, KY Attendance: 12269

Name	Action	Action	Score	Clock	Diff	Name	Action	Action
			92-64	4 1:01	+28	K Harkins	Layup Made	
B Pritchard	Turnover			4 0:40				
				4 0:40		A Drane	Steal	
			92-66	4 0:37	+26	K Harkins	Layup Made	
				4 0:23		K Harkins	Personal Foul	
W Jones	FT Attempt	Mason Deadball Reb		4 0:23				
W Jones	FT Made		93-66	4 0:23	+27			
S Vice	Def Rebound			4 0:11		D Schulten	3Pt Attempt	
W Jones	Layup Att	W Jones Off Reb		4 0:05				
W Jones	Putback Att			4 0:02		J Mayes	Def Rebound	

End of Period Summary Royals 93 Bears 66

Largest Lead: Royals 92 Bears 57 (35 pts)

Lead in Period: Royals 92 Bears 57 (35 pts)

5 for 6 oppo pts

3 for 3 pts

6/15 for 40.0 %

10/15 for 66.7 %

Turnovers

2nd Chances

Field Goals

Free Throws

Lead Changes: 8 Ties: 2

Lead Changes: 0 Ties: 0 (this period)

2 for 4 oppo pts

6 for 5 pts

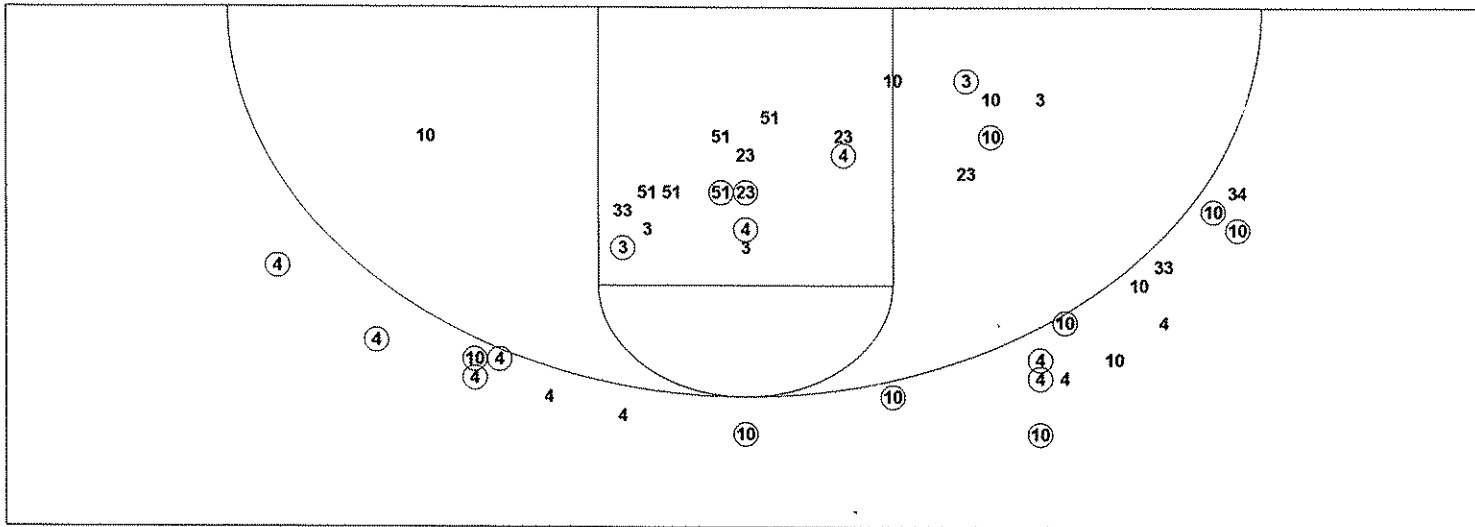
8/25 for 32.0 %

4/7 for 57.1 %

2002 KHSAA BOYS' SWEET 16 - TEAM SHOT CHART for the Mason County Royals

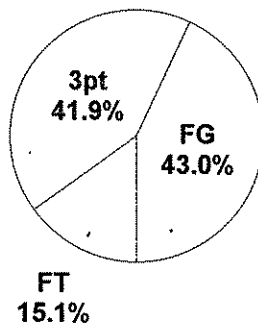
Mason County Royals vs. Butler Bears

DATE: 03/13/2002 TIME: 2:55 pm SITE: Rupp Arena-Lexington, KY

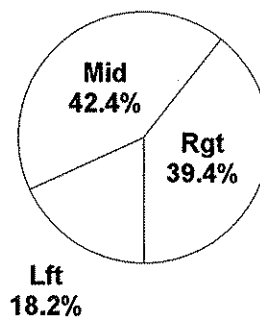


Shot Summary	M/A	%	PTS
3Pt FG	13/21	61.9%	39
2Pt FG	20/38	52.6%	40
Layups - L	1/1	100.0%	2
Layups - R	5/8	62.5%	10
Dunks	0/0	0.0%	0
Putbacks	7/8	87.5%	14
Overall Shooting	33/59	55.9%	79
Free Throws	14/23	60.9%	14
Total Points			93

Scoring Distribution

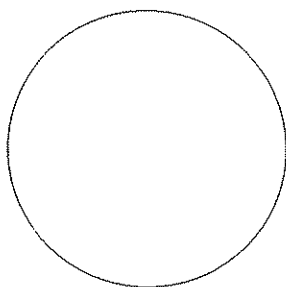


Scoring Locations

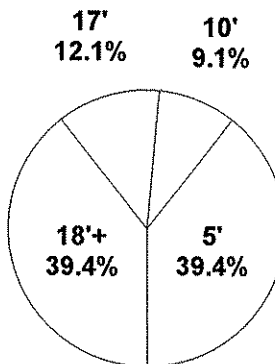


By Period	FG	FGA	FG%	3Pt	3PA	3P%	FT	FTA	FT%	PTS	ORB	DRB	TR	PF	AST	TO	BS	ST	P/S
1st Period	7	12	58.3	2	3	66.7	0	0	0.00	16	2	6	8	2	4	4	1	1	1.33
2nd Period	9	15	60.0	1	2	50.0	4	6	66.7	23	4	6	10	6	2	3	1	1	1.28
3rd Period	11	17	64.7	7	11	63.6	0	2	0.00	29	4	4	8	4	5	2	0	1	1.61
4th Period	6	15	40.0	3	5	60.0	10	15	66.7	25	3	12	15	4	4	5	0	1	1.14
Game	33	59	55.9	13	21	61.9	14	23	60.9	93	13	28	41	16	15	14	2	4	1.33

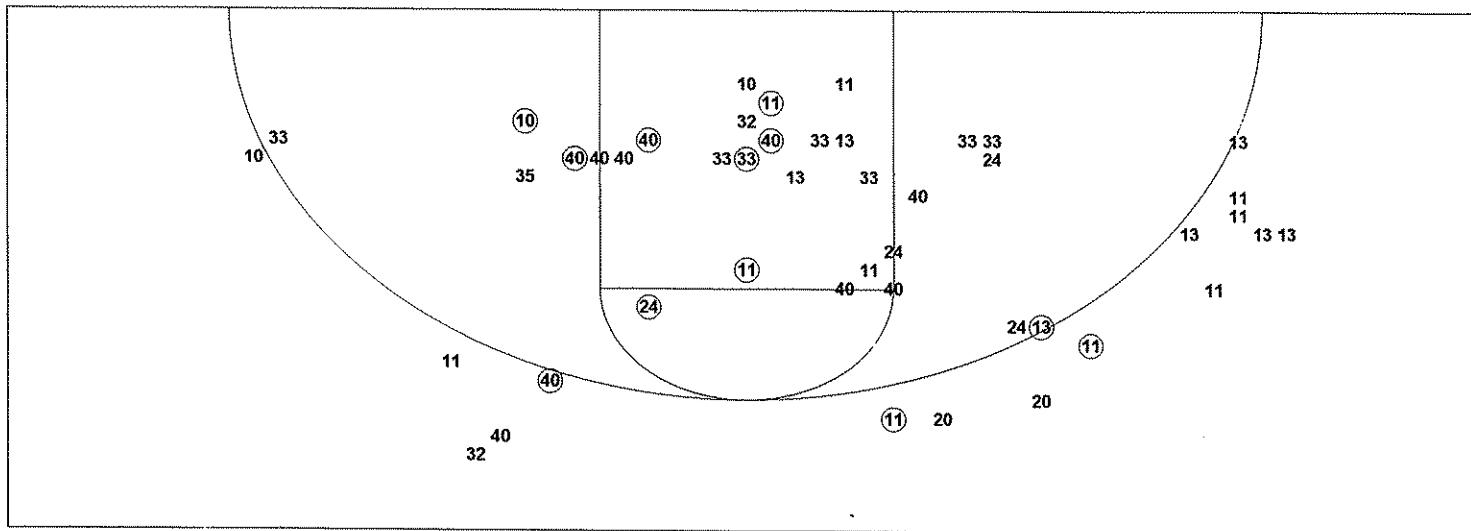
Scoring Breakdown



Scoring Range

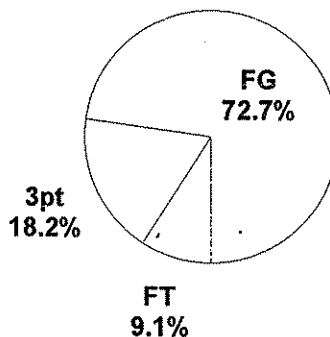


2002 KHSAA BOYS' SWEET 16 - TEAM SHOT CHART for the Butler Bears
Mason County Royals vs. Butler Bears
DATE: 03/13/2002 TIME: 2:55 pm SITE: Rupp Arena-Lexington, KY

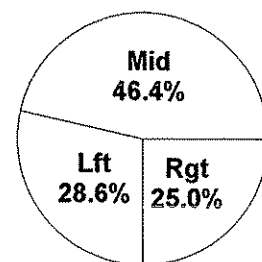


Shot Summary	M/A	%	PTS
3Pt FG	4/19	21.1%	12
2Pt FG	24/53	45.3%	48
Layups - L	5/10	50.0%	10
Layups - R	5/7	71.4%	10
Dunks	0/0	0.0%	0
Putbacks	6/9	66.7%	12
Overall Shooting	28/72	38.9%	60
Free Throws	6/12	50.0%	6
Total Points			66

Scoring Distribution

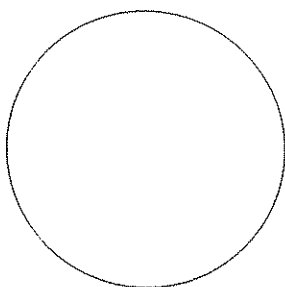


Scoring Locations



By Period	FG	FGA	FG%	3Pt	3PA	3P%	FT	FTA	FT%	PTS	ORB	DRB	TR	PF	AST	TO	BS	ST	P/S
1st Period	9	20	45.0	2	4	50.0	0	1	0.00	20	6	3	9	0	3	2	0	3	1.00
2nd Period	3	11	27.3	0	4	0.00	2	3	66.7	8	2	3	5	3	2	7	1	1	0.67
3rd Period	8	16	50.0	0	0	0.00	0	1	0.00	16	5	3	8	3	1	4	0	1	1.00
4th Period	8	25	32.0	2	11	18.2	4	7	57.1	22	6	8	14	9	0	2	0	3	0.79
Game	28	72	38.9	4	19	21.1	6	12	50.0	66	19	17	36	15	6	15	1	8	0.85

Scoring Breakdown



Scoring Range

